



Image Integration is proud to provide this complete resource for those working with digital images. To see how else we might help YOU, click here to go to our home page.

[Site Map](#)

Setting up a Test Image Library

for Evaluating Portfolio and Cumulus Part II-Accessing Info

by Trudy Levy
Image Integration



[Click here for a PDF version for printing](#)

Part 2- Evaluating ACCESSING INFORMATION

First part of accessing information is finding it. As I mentioned earlier for many of your users, finding images may be most effectively done with descriptive terms.

In Portfolio

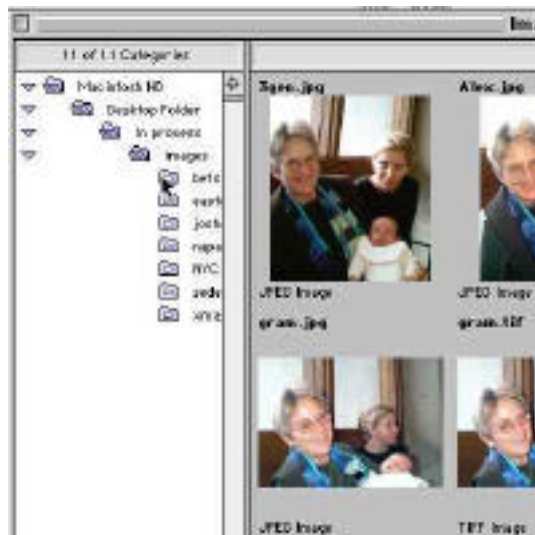
There is something that they call Quick Find in the their toolbar. Type in a keyword and enter.



If you want to see a list of words used, you either select the Master Keywords palette, if you have made such a list, or select Catalog Properties from the Catalog draw down menu and select the Statistics tab. If you then click on the Calculate button, it will show you all terms currently inputted.

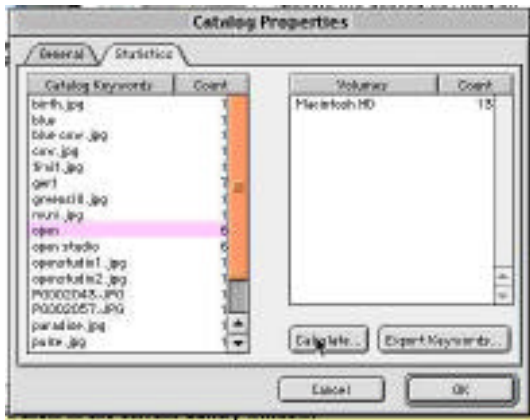
In Cumulus

Descriptive term search is equally simple. Click on the folder with the right term.



This method shows you all the assigned terms and their hierarchy. Because of the hierarchical arrangement, can search on a root category or its sub. It is important to remember that even though it mimics your folder structure,

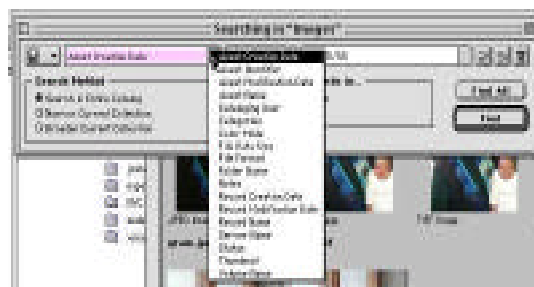
it is not mirroring it.



You can then click on a term in either palette and it will find all those images to which it has been assign. Unfortunately this list has to be recalculated each time, you open the Catalog Properties palette

The organization and memory aid of Cumulus' display of terms is often very helpful to many users, especially those not familiar with the image library. However, it appears to be something which it isn't which may be confusing to some.

Finding images by looking in the fields is very similar for both programs as you can see. Both an the usual find icon in the tool bar which brings up a dialog box which has drop down menus with a list of fields and another with a list of parameters such as starts with, contains etc. Both will also allow you to save finds or queries.



So now that you have found the images you are interested in, lets explore ways to actually access the files.

In Portfolio

You can select Edit Original from the Item drop down menu or select Copy Original.

The first time you select Edit Original, you will be

In Cumulus

In the Asset drop down menu you have a choice to open with the creating application or other. It will ask you to select the other.

asked to choose an application, which will become the default editing application.

From this same drop down menu you can also manage your files, such as moving, renaming, and deleting files. It is best to do that within your image management program so that it knows where your file is. *The next version does alert you if a file has been moved, but you still have to find it.*

You can also select Find Original and it will show its location.

Of course the future access of your images will probably be from the Web. Both programs try to address this issue in several ways. So far neither have really developed a plug and play system, but considering what they are doing and the low cost, it may be worth the effort.

In Portfolio

Minimally you can create HTML pages from your catalogs in selected Gallery views by selecting Export - HTML for the File drop down Menu. These then can form a static catalog which people can view from the Web. They can't access the originals and you must update the web catalog every time you add images.

In the new version you can ship this off with a Portfolio browser on a CD-ROM.

Portfolio has PortWeb which they define as a Plug In for your web server which allows it to access your Portfolio server. Again the web installation is relatively easy, but the modifying of the HTML templates has many pulling their hair out. Be prepared to learn or have some who knows HTML, forms, and parameters.

You can download demos for both web systems, but it will involve your Web server people.

Bells and Whistles to Look at

An unique item in Portfolio is the incorporation of the Digimarc ID. Emailing collections in Cumulus. Slide shows in both programs. The other area to be examined is the security method. Both can be set up with password access and various levels of access which are carried over into their web programs also. In both look under Catalog - properties.

After you try out the programs let us know what you think. [Portfolio](#) or [Cumulus](#)

Under the Asset drop down menu you will also find file management commands and also ones to print and email images.

To find the original simply select Show Location in the Asset drop down menu.

In Cumulus

You can do much the same thing. Again in the File drop down menu, select Output to HTML.

Canto already has a browser which can accompany the HTML files and give you a readable program only. It is a separate program.

Another separate Program is the Web Publisher. It is basically a program which allows your web server to access your Cumulus server. It works quite smoothly. The only difficulty you might have is when you attempt to modify the HTML templates which they provide. You must be very careful.